





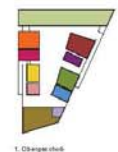
Standortplan M 1:1000



Erdgeschoss M 1:500



1. Obergeschoss M 1:250



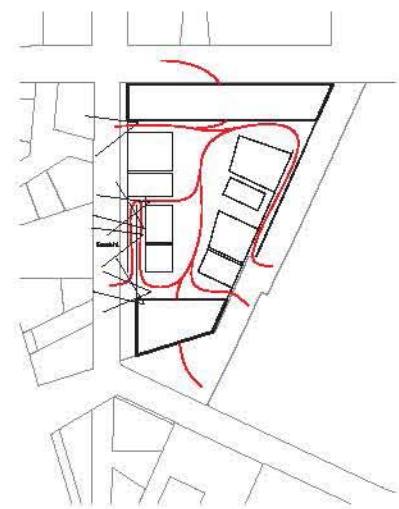
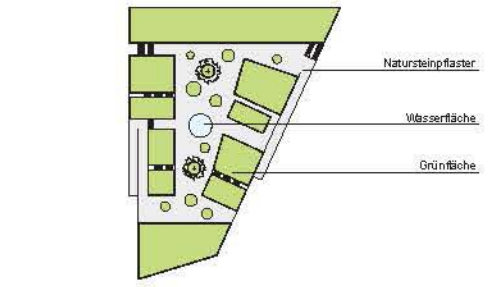
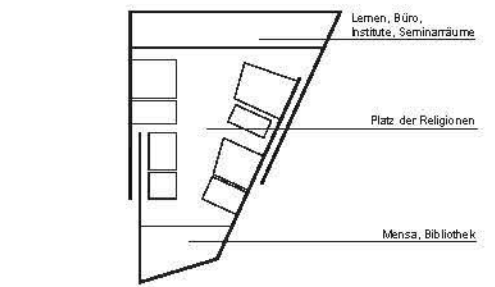
1. Obergeschoss



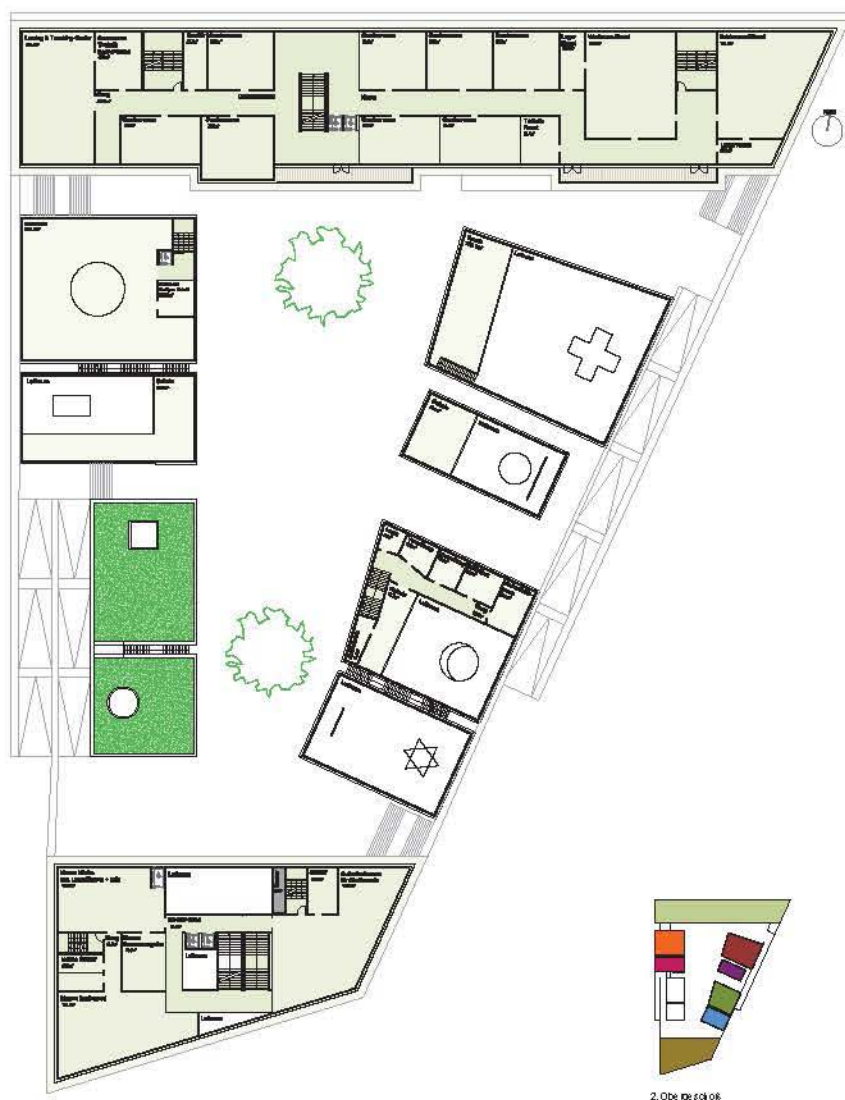
Elevation A-A M 1:200



Elevation B-B M 1:200



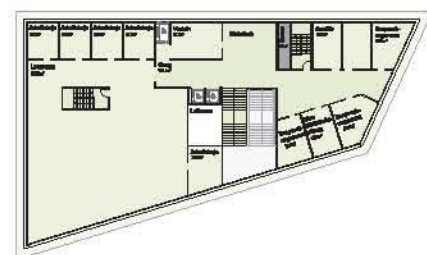
Direktor: GFG  
Sachbearbeiter: K. K. K.  
Architekt:



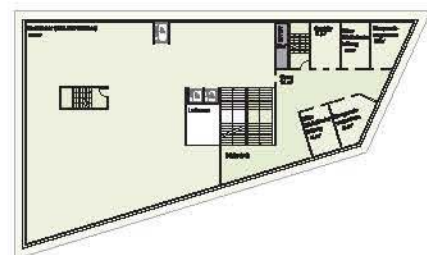
2. Obergeschoss M 1:250



3. Obergeschoss M 1:250



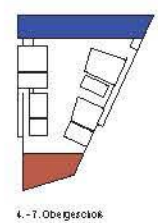
5. Obergeschoss M 1:250



4. Obergeschoss M 1:250



3. Obergeschoss M 1:250



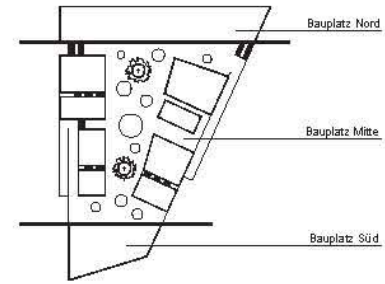
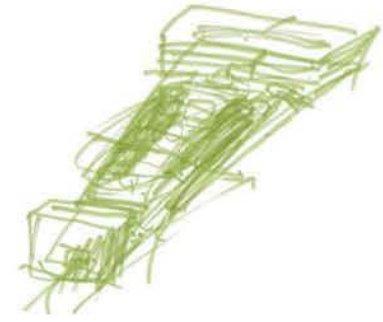
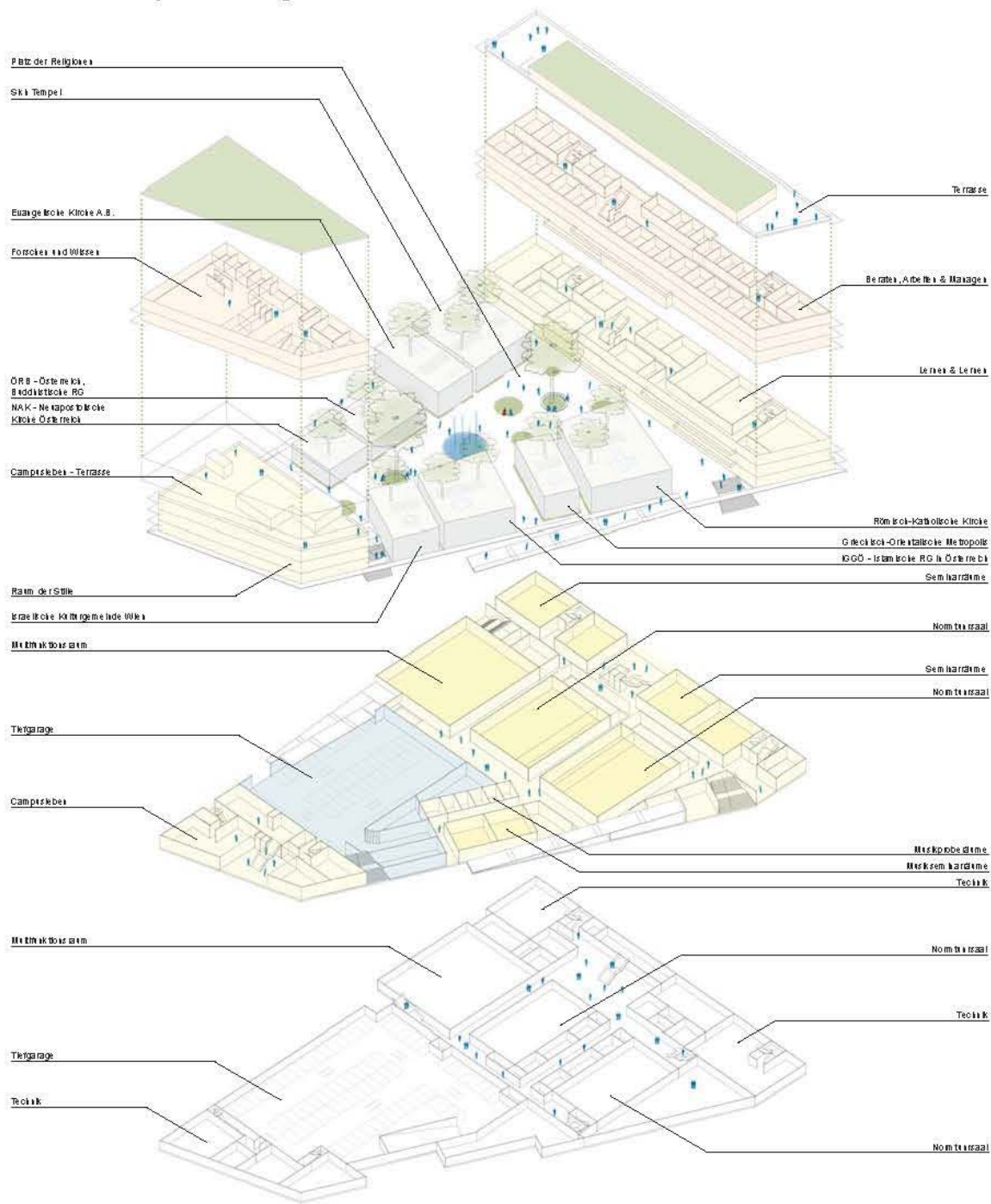
4. - 7. Obergeschoss

- Lernen & Lehre
- Campusküche
- Forschung und Lehre
- Berater, Arbeit & Meetings
- Raum der RSTB
- Römisch-Katholische Kirche
- Orthodoxe Kirche - Metropol
- OGG - Islamische Religionsgemeinschaft Österreich
- Evangelische Kirche in Österreich
- Sikh Tempel
- Buddhistische Kirche A.B.
- Orthodoxe, Serbisch-Orthodoxe Kirche
- NAK - Neopaganische Kirche Österreich
- Türkisch
- Terrasse

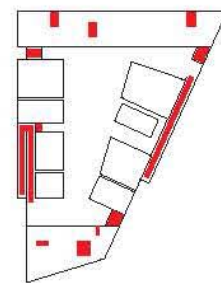


Architektur M 1:250

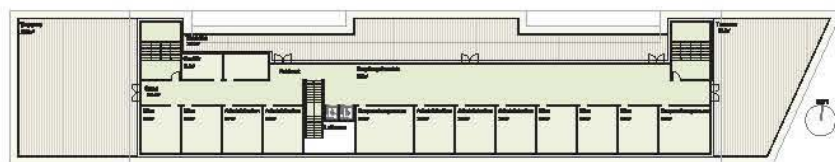




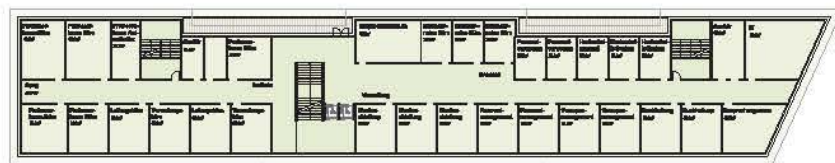
Bauplatz in ig



Eckkling



7. Obergeschoß M 1:250



6. Obergeschoß M 1:250



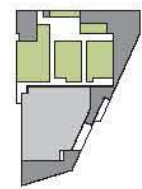
5. Obergeschoß M 1:250



4. Obergeschoß M 1:250



Uttageschoß M 1:250



Uttageschoß



Schnitt 2-2 M 1:250

